



# **How to Attach Butler Robotics to a Majestic Frame**

**In order to accommodate all machine types we use universal parts bags, not all parts will be used in every installation.**

**Bag #**

**Contents**

**Picture**

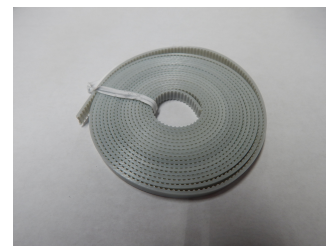
**Cables**

Vary by machine



**X1**

1-White belt



**Y1**

1 - Black Belt (86")



**Z1**

5- Plastic Anchors  
2- Screw (M5 x 12mm)  
2- Washer (M5)  
5-Zip ties



**Z3**

1 - Motor Pulley Cover  
2 - Nuts (M5 K-Lock)



## Bag #

## Contents

## Picture

**D1**

- 1- Display bracket
- 2- Screw (M3 x 8mm)
- 2- Remote base
- 4- Screw (M6 x 8)
- 4- Nut (M6)
- 2- Poly disc
- 2- Screw (8-32 x 1/2")



**I4**

- 1- Rear idler bracket
- 1- Rear idler clamp
- 2- Screw (10-24 x 1/2")
- 2- Fender washer (#10)
- 1- Pulley assembly



**Y6**

- 1- Eye bolt (M5 x 40mm)
- 2- Pan head screw (M5x 12mm)
- 4- Lock nut (M5)
- 1- Thumb screw (#10-24 x 1/2")
- 1- Universal Y-bracket
- 1- Carriage bracket
- 2- Flat washer (M5)



\*\*See included addendum for new stye Belt brackets Instructions\*\*

**X2**

- 2- Clamp bracket (inside)
- 2- Clamp bracket (outside)
- 4- Screw (M5 x 25mm)
- 8- Hex nut (10-32)
- 2- Eye bolt (M5 x 40mm)



\*\*See included addendum for new stye Belt brackets Instructions\*\*

**M2**

- 1- Motor box bracket
- 2- Pan head screw (1/4-20 x 1/2")
- 2- Pan head screw (M5 x 12mm)



## Installing the Butler Motor Box (Bag M2)

- 1 Attach the motor box bracket to the front of the carriage with the provided hardware.

*Washers need to be inserted between the carriage and the bracket.*



- 2 Use two M5 x 1/2" screws to mount the motor box to the motor box bracket with the pulley on the left as shown.





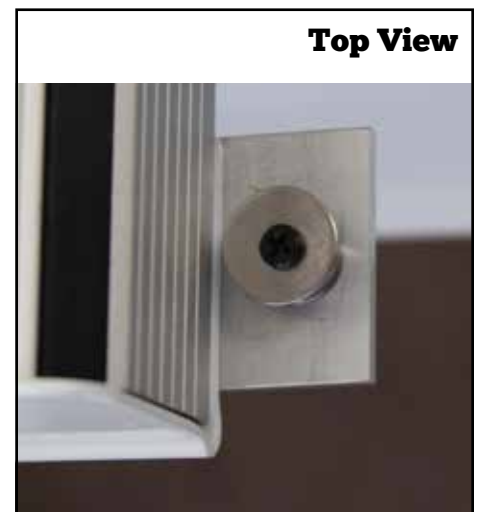
## Installing the Rear Idler Pulley (Bag I4)

- 1** Remove the screws located under the back left corner of the carriage.

Set aside for the next step.

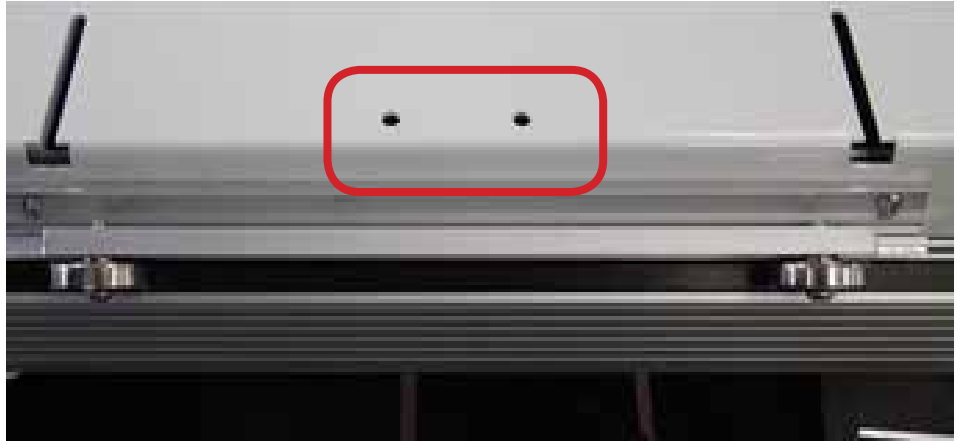


- 2** Use the screws removed in step one to fasten the rear idler bracket to the carriage.



## Installing the Black Belt (Bag Y6 and Bag Y1)

- 1** Take and attach the carriage bracket to the pre drilled holes on left hand side of the carriage with the provided hardware.



- 2** Attach one end of the black belt to the eye bolt on the carriage bracket with the belt clamps.

Make sure the teeth face the carriage.

*See Appendix A for belt clamp help.*



- 3** Loop the belt around the pulley on the motor box and run it back to the rear idler pulley.



- 4** Loop the belt around the rear idler pulley and attach it to the other side of the carriage bracket with the belt clamps.



## Installing the Black Belt (Bag X2 and Bag X1)

- 1** Insert the eye bolt into the middle hole of the inner belt bracket.



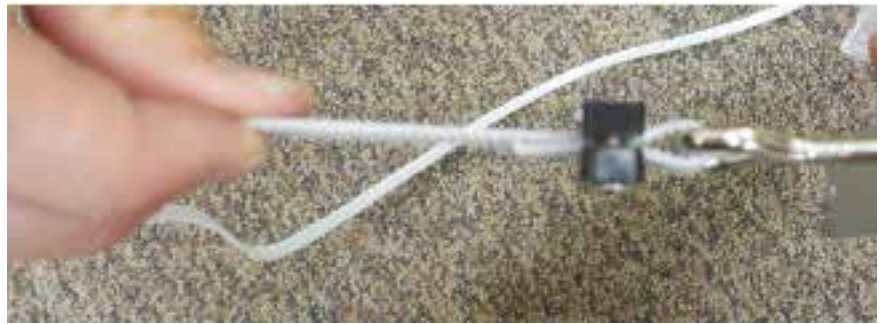
- 2** Clamp the belt brackets to the frame in such a way that the eye bolt will be in-line with the pulley on the back of the motor box.

Repeat for both sides.



- 3** Use the belt clamps to attach the belt to an eye bolt.

*See Appendix A for belt clamp instructions.*



- 4** Release the belt lock lever and run the belt as shown with the teeth facing up.



- 5** Use the belt clamps to attach to the eye bolt on the other side.

Reengage the lock lever on the motor box.

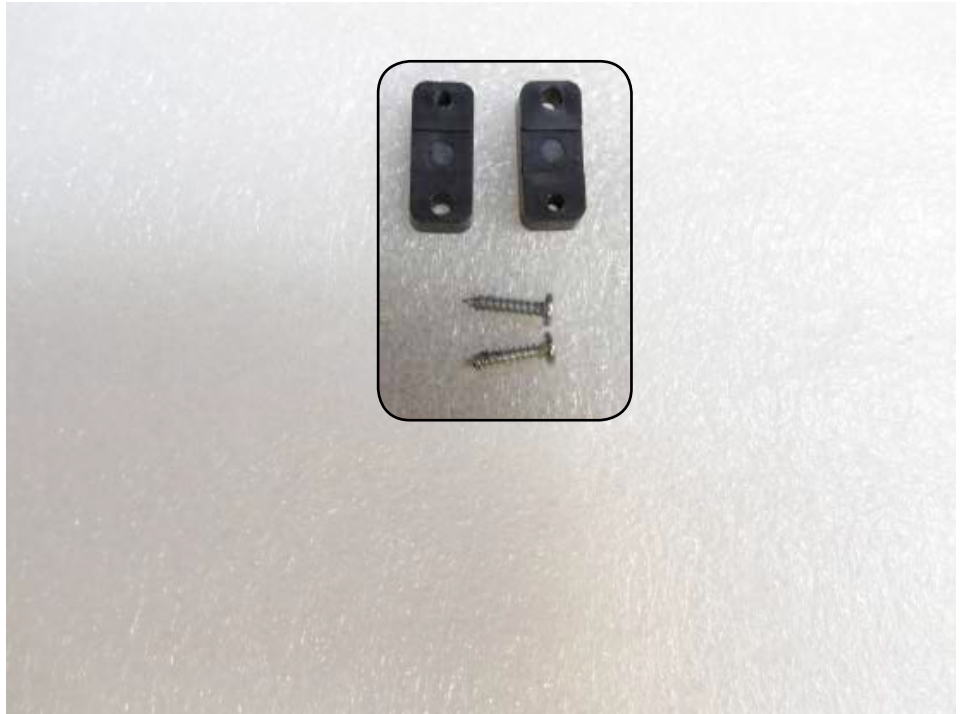


- 6** Adjust tension as needed. The belt should have about 1/2" of play with the motor box in the middle of the frame.

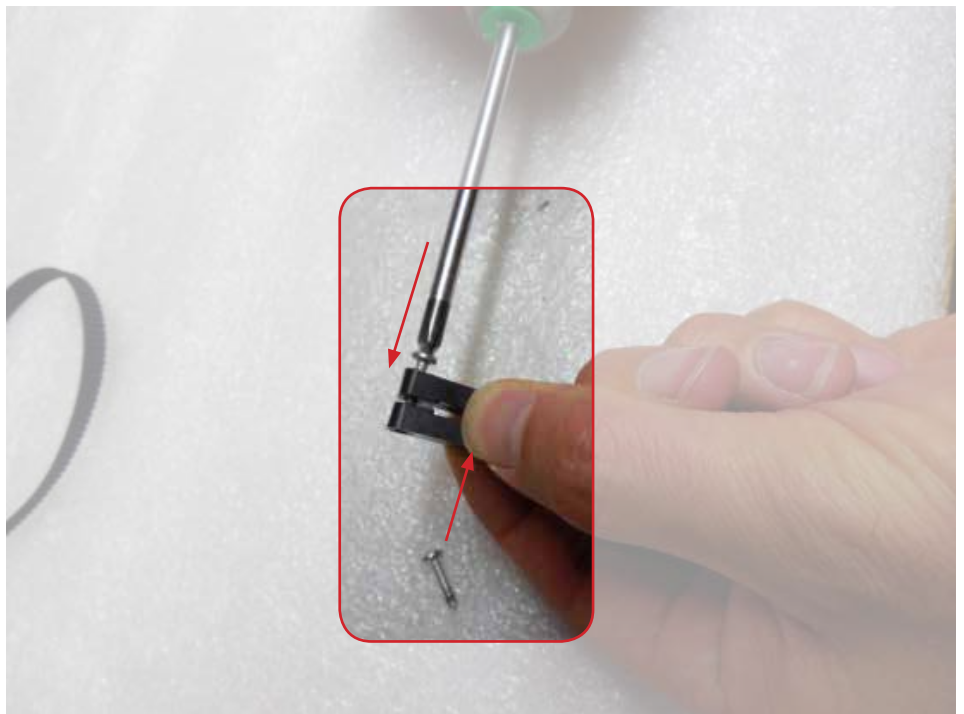


## Appendix A - How to use Belt Clamps

A belt clamp consists of two clamps and two screws.



- 1** Using a Phillips screwdriver, insert each screw on opposite sides of the clamps and tighten halfway.



**2**

Thread the belt between the clamps, loop it around and reinsert it between the clamps.



**3**

Align the belt teeth, then finish tightening the clamps.



# Appendix B- Additional help

## Installing cables

Please refer to the Connecting Robot to Quilt Machine instruction set for help installing cables.

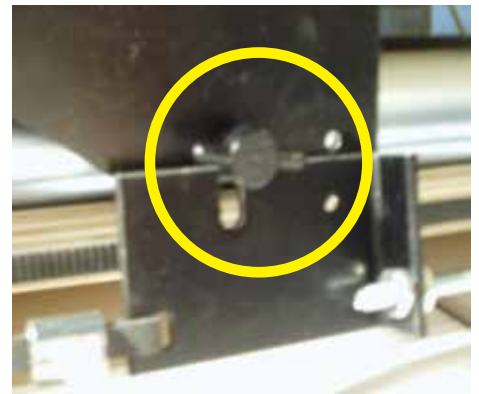
## Power on the robotics

Use the power switch located on the side of the motor box with the ports to power the motor box off and on.

## Disengage belts for free motion

In order to use free motion with the butler connected the belts will need to be disengaged.

To disengage the x-belt, move the locking lever away from the edge of the motor box.



To disengage the y-belt, loosen the wing-nut on the carriage bracket.

You can now use free motion quilting.





**Still need help?**

Visit [support.quiltez.com](https://support.quiltez.com) for  
tutorial videos and additional  
help documentation