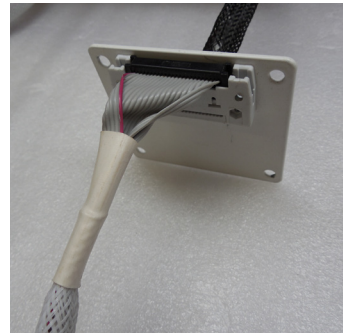


Janome Robotics Handle Bar

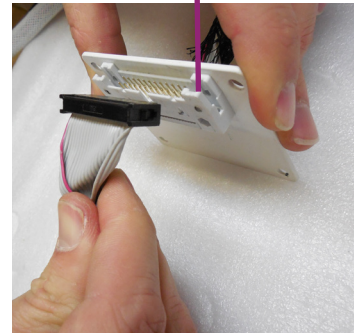


Disconnect

Unplug the handle bar wires from the side port.



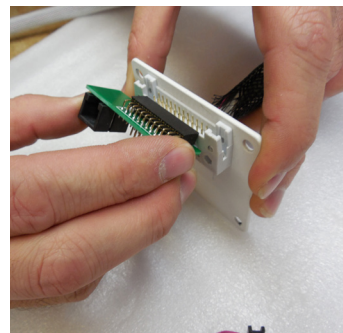
Side Port



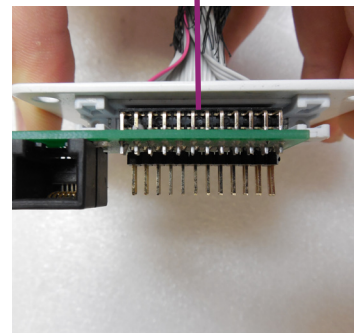
Modify

Insert the adapter into the side port.

Be sure that all of the pins properly line up.



Aligned Pins

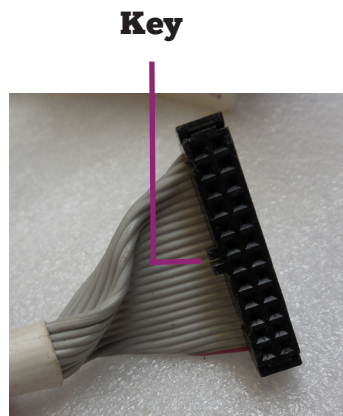


Reconnect

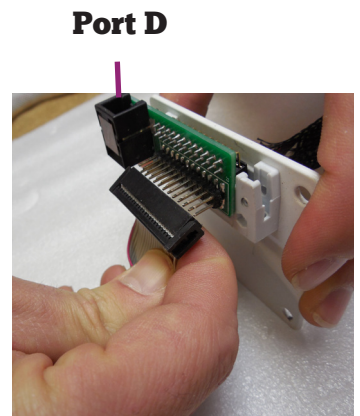
With the key side down, Insert the original handle bar wires into the adapter port. Insert any Port D wires into the available adapter port.

On the robot display menu, go to **Home > Setup > Advanced**

Select **Tin Lizzie** from the **Machine Type** drop-down menu.



Key



Port D